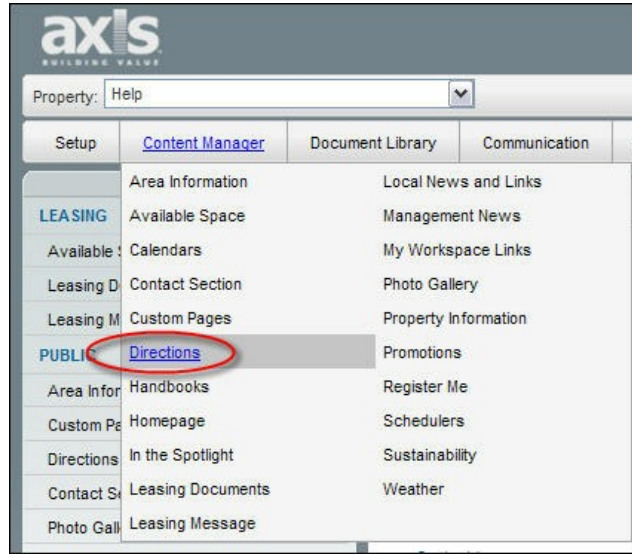


Directions

[Control Panel](#) > [Content Manager](#) > [Directions](#)

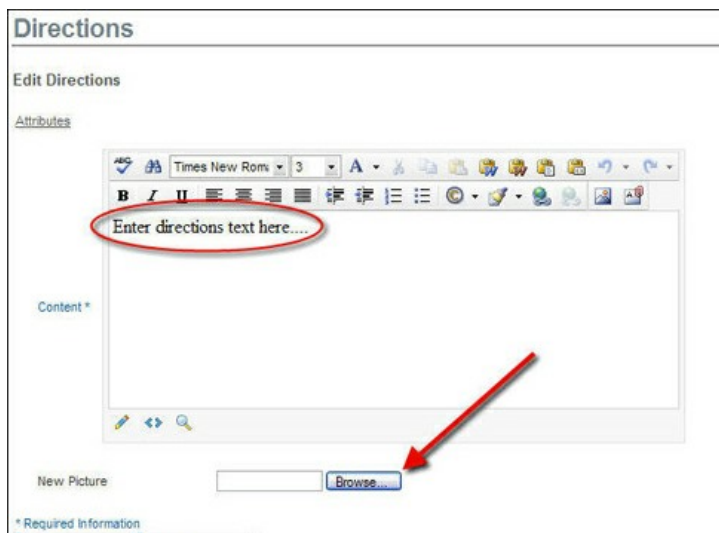
Add Directions/ Picture:



1. To add directions from a destination, type in the desired information into the "Content" box of the RadEditor.
2. Using the embedded editing tools, you can choose the format of the font (i.e. **Color**, Alignment, **Bold**, etc.)
3. To add a picture click the **Browse** button, and select the file from your computer.

Note:

- A embedded Google Maps plug-in with your property's address will automatically be inserted into your directions page.
4. Once you have chosen the designated picture, click **Save**.



- To view the new changes added, go to your Portal and refresh the page.

One CORPORATE TOWER

HOME | CONTACT | AREA INFO | PROPERTY INFO | LEASING INFO | TENANT HANDBOOK | PRESS ROOM | LOGIN | TESTS | PUBLIC SCHEDULER

DIRECTIONS

DIRECTIONS FROM THE SOUTH

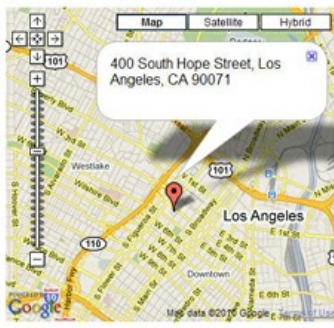
While on the 405 North. Take 110 North. Exit 3rd/4th Street.
Turn Right on W. 4th Street.
Turn Right on Hope Street.
Parking in garage corner of Hope Street and Hope Place.

DIRECTIONS FROM THE NORTH

While on the 101 South. Take 110 South. Exit 4th Street towards downtown.
Continue on 4th Street. Turn Right on Hope Street.
Parking in garage corner of Hope Street and Hope Place.

DIRECTIONS FROM LOS ANGELES AIRPORT (LAX)

Take Sepulveda Blvd. South to 105 East.
Take 110 North. Exit 3rd/4th Street.
Turn Right on W. 4th Street.
Turn Right on Hope Street.
Parking in garage corner of Hope Street and Hope Place.



From:

To: 400 South Hope Street, Los Angeles, CA 90071

[Get Directions!](#)